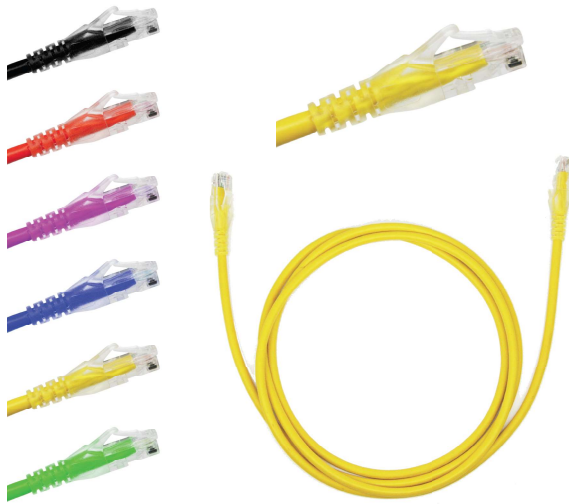
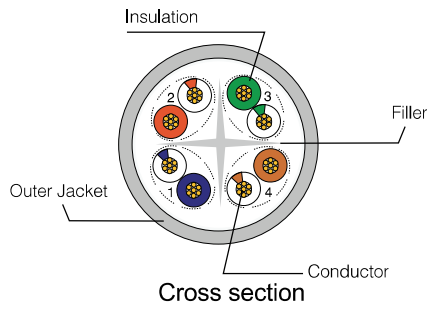


PRODUCT FIGURE



DESCRIPTION

Cat 6 LSZH Patch Leads meet and exceed all component compliance requirements for Cat 6 and are compatible with Cat 6 Patch Panels & C6 Outlets guaranteeing 250MHz broadband transmission performance

FEATURES

Unique design of Cat6 RJ45 modular plugs and line pair decrease cross talk and increase allowance

Excellent attenuation and crosstalk continuity

Meet or exceed the requirement for U/UTP system

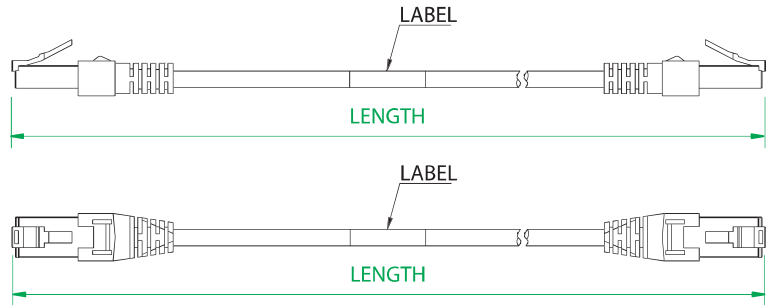
Durability:1000 Plugging

Allow RJ45 plugs to provide high-density solution

Available in different colors

They are available in a variety of the length

PRODUCT FIGURE



PATCH CABLE U/UTP CATEGORY 6

P/N: DPC-C6U-L-L0.5-CXX	length 0.5m	P/N: DPC-C6U-L-L5.0-CXX	length 5.0m
P/N: DPC-C6U-L-L1.0-CXX	length 1.0m	P/N: DPC-C6U-L-L7.0-CXX	length 7.0m
P/N: DPC-C6U-L-L1.5-CXX	length 1.5m	P/N: DPC-C6U-L-L10.0-CXX	length 10.0m
P/N: DPC-C6U-L-L2.0-CXX	length 2.0m	P/N: DPC-C6U-L-L15.0-CXX	length 15.0m
P/N: DPC-C6U-L-L3.0-CXX	length 3.0m	P/N: DPC-C6U-L-L20.0-CXX	length 20.0m

CONSTRUCTION

AWG	24
Conductor Dimension(mm)	7/0.18±0.02
Solid and Stranded	Stranded bare copper
Insulation Material	HDPE
Insulation Dimension(mm)	0.91±0.05
Jacket Diameter(mm)	5.90±0.30

Mechanical Characteristics

Rated temperature	-20---75°C
Product mix	LSZH
Pre aging Tensile strength(Mpa) elongation(%)	≥9 ≥100
After aging Tensile strength(Mpa) elongation(%)	≥70% of unaged ≥50% of unaged
Aging condition(°Cxhrs)	100x168

Electrical Characteristics

Dielectric strength	1,000V/min
Voltage Class (maximum)	150V
Rated current (maximum)	1.5A
Insulation resistance (miximum)	500megohm
Conductor DC Resistance@20 Deg.C (maximum)	≤14.5Ω/100M

